



# **Matik**<sup>®</sup>.NET/ISND

INFORMATION SYSTEM  
FOR DIESEL DISPATCHING

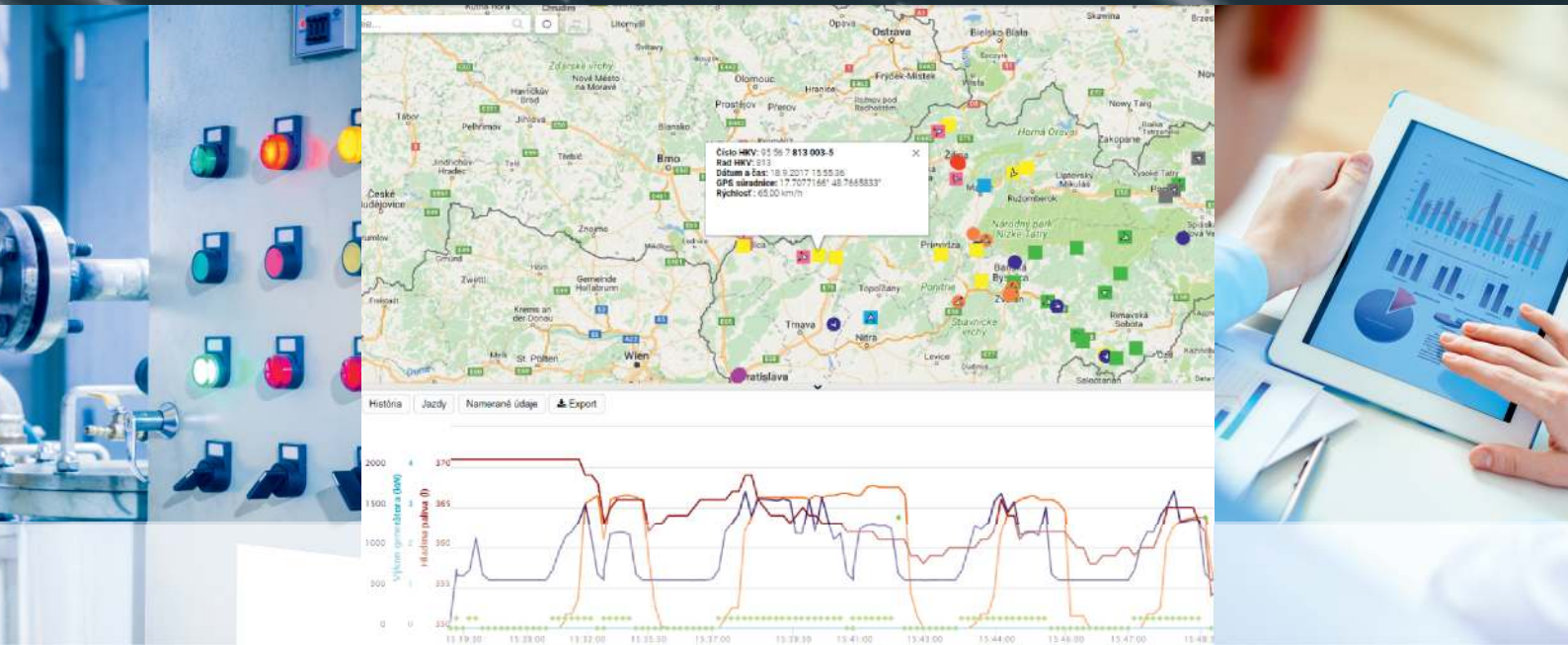
A PERFECT OVERVIEW OF THE FUEL  
CONSUMPTION OF YOUR VEHICLES

LOCALIZATION | CONSUMPTION | ALARMS | REPORTS



#### WHAT YOU GAIN

- a comprehensive solution for diesel dispatching for the transporter
- an overall view of fuel consumption with indication of non-permitted use
- support for consumption planning of fuel for future periods
- automatized collection of data from multiple sources and its evaluation
- monitoring of faults occurrence and recording repairs to vehicles



## CHARACTERISTICS

### CURRENT CONSUMPTION

XMatik®.NET/ISND provides a comprehensive overview of consumption in the vehicle fleet. Through the system, the user has access to fuel filling, distribution, and consumption data on individual vehicles measured by sensors in the vehicle tanks. On the basis of the measured data, the system immediately compares and validates vehicle consumption from each journey and evaluates a sudden drop in fuel level.

### ALARMS IN REAL TIME

In the event of a critical amount of fuel in the tank, a vehicle standing a long time with the engine running, sudden fuel loss, unsuccessful validation of received data and other user-defined undesirable conditions related to vehicle operation, system users are immediately alerted through alarms that, apart from being shown in the system itself, can be sent by e-mail or SMS text message.

### CREATION OF REPORTS AND INSTRUMENTS FOR CONTROLS

The system evaluates received measurements and then provides detailed reports on fuel status and consumption, vehicle activity, including the status and mode of the engine, or reports containing invalid or missing measurements. All analytical documentation and reports needed for further processing are made available to the user in office software (MS Office)

### POSITION AND MEASUREMENT

Using dynamic graphical visualization of objects on a map, all data on the status, current position, consumption and measurements are made transparent and provide maximum ease for monitoring and tracking the vehicle fleet.

### PLAN OF CONSUMPTION

The system enables calculation of the expected consumption of the vehicles on the basis of the planned amount of transportation in the coming period.

### TECHNICAL AND COMMERCIAL RECORDS

The system enables the recording of journeys and infrastructure including technical records of vehicles as well as synchronization with maintenance or business systems (e.g. SAP)

### CENTRALIZATION OF DATA

Support for data collection from multiple systems offers integrated processing and evaluation of data and the related creation of documents and reports.

### CONFIGURABILITY

Support for the setting the display of data with different levels of granularity, units, or graphical and tabular settings of various overviews, including user-defined monitoring of undesirable operational conditions of vehicles.

## LIST OF MODULES

### PROCESSING OF MEASUREMENTS

### TECHNICAL AND COMMERCIAL RECORDS

### VIEWING AND MANAGING THE TRANSPORTATION PLAN

### PLANNING CONSUMPTION OF DIESEL

### FAULTS AND REPAIRS

### REPORTING

## FURTHER INFORMATION



## CONTACTS

### ADDRESS

Sféra, a.s., Karadžičova 2, 811 08 Bratislava  
Slovakia

TEL: +421 (2) 502 13 142  
E-MAIL: obchod@sfera.sk  
www.sfera.sk

